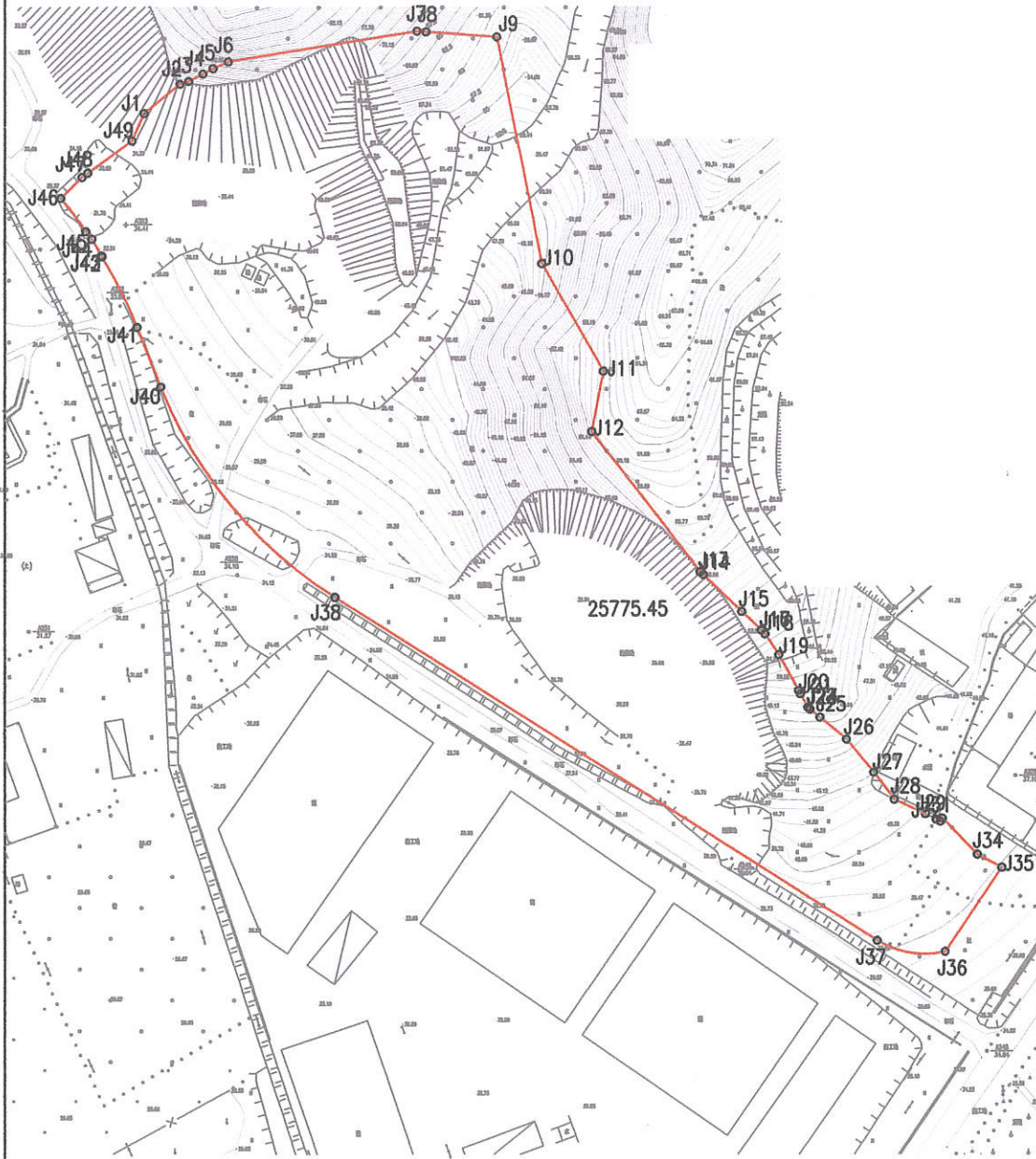


宗地图

地籍图号:

单位: 米、平方米

宗地编号		单位名称	惠东县人民政府
------	--	------	---------



界址点坐标表

点号	X	Y	边长
J1	2556432.013	566739.162	13.13
J2	2556440.294	566749.349	2.57
J3	2556441.045	566751.802	4.61
J4	2556443.191	566755.882	3.20
J5	2556444.683	566758.718	4.78
J6	2556446.591	566763.079	54.11
J7	2556455.071	566816.524	2.56
J8	2556454.895	566819.082	20.11
J9	2556453.512	566839.145	35.14
J10	2556389.400	566851.976	65.38
J11	2556358.912	566869.443	17.41
J12	2556341.814	566866.154	50.31
J13	2556302.002	566896.919	1.18
J14	2556301.184	566897.772	15.01
J15	2556290.793	566908.610	7.63
J16	2556285.512	566914.118	0.10
J17	2556285.424	566914.175	1.47
J18	2556284.408	566915.235	7.04
J19	2556278.534	566919.117	11.60
J20	2556268.399	566924.765	1.10
J21	2556267.448	566925.327	4.37
J22	2556263.635	566927.452	0.70
J23	2556263.188	566927.997	0.11
J24	2556263.100	566928.069	3.67
J25	2556260.772	566930.907	9.70
J26	2556254.624	566938.405	12.19
J27	2556245.217	566946.151	9.67
J28	2556237.514	566952.006	13.20
J29	2556231.872	566963.934	0.02
J30	2556231.887	566963.942	1.31
J31	2556231.327	566965.127	1.05
J32	2556232.259	566965.600	0.02
J33	2556232.274	566965.608	14.43
J34	2556221.920	566975.661	7.81
J35	2556218.233	566982.550	28.75
J36	2556194.397	566986.467	19.55
J37	2556197.554	566947.174	182.06
J38	2556294.881	566793.296	0.08
J39	2556294.904	566793.229	77.39
J40	2556354.514	566743.874	18.18
J41	2556371.420	566737.184	22.38
J42	2556391.489	566727.275	0.32
J43	2556391.785	566727.185	5.47
J44	2556396.492	566724.385	2.81
J45	2556398.694	566722.640	11.75
J46	2556408.079	566715.567	8.40
J47	2556413.979	566721.548	2.06
J48	2556415.188	566723.217	15.48
J49	2556424.269	566735.755	8.46
J1	2556432.013	566739.162	

S=25775.45 平方厘米 合38.6632亩

2000国家大地坐标系 (Lo=114°)

宗地面积: 25775.45m²

比例: 1:2000

绘图日期: 2020年6月

