

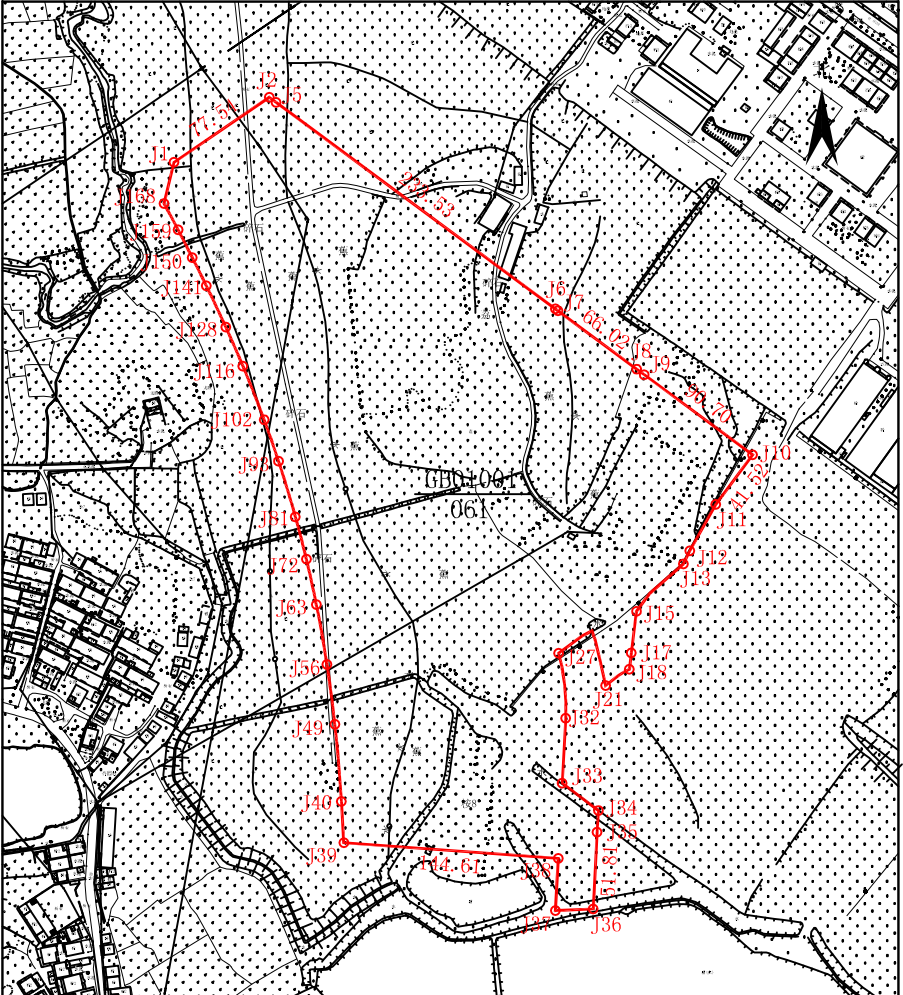
# 宗地图

单位: m.<sup>2</sup>

宗地代码: 441302020004GB01001

所在图幅号: 2551.20-523.50

宗地面积: 103786



惠州仲恺高新区不动产登记局

2021年02月解析法测绘界址点  
制图日期: 2021年02月26日  
审核日期: 2021年02月26日

1:5000

绘图员: 雷朝  
审核员: 赵细元



界址点坐标表				界址点坐标表				界址点坐标表			
点号	X	Y	边长	点号	X	Y	边长	点号	X	Y	边长
J1	2552113.378	5240666.523	77.54	J20	2551768.442	5243665.328	10.86	J39	2551656.022	524180.725	27.76
J2	2552137.319	524130.552	0.18	J21	2551761.717	524356.806	18.37	J40	2551683.734	524179.107	5.77
J3	2552157.214	524130.700	3.30	J22	2551779.665	524355.873	13.83	J41	2551689.490	524178.741	5.77
J4	2552155.253	524133.351	2.31	J23	2551793.084	524349.556	1.57	J42	2551695.249	524178.346	5.78
J5	2552153.878	524135.211	233.53	J24	2551794.568	524349.030	4.18	J43	2551701.010	524177.919	5.78
J6	2552015.027	524322.975	2.13	J25	2551798.522	524347.682	7.45	J44	2551706.772	524177.462	5.78
J7	2552013.755	524324.686	66.02	J26	2551795.038	524341.101	19.72	J45	2551712.536	524176.973	5.79
J8	2551974.499	524377.768	6.22	J27	2551783.414	524325.173	9.22	J46	2551718.301	524176.453	5.79
J9	2551970.800	524382.769	90.70	J28	2551774.466	524327.398	1.04	J47	2551724.066	524175.899	5.80
J10	2551916.868	524455.697	41.52	J29	2551773.438	524327.563	10.58	J48	2551729.833	524175.313	5.80
J11	2551883.522	524430.951	35.78	J30	2551762.991	524329.237	11.62	J49	2551735.599	524174.694	5.80
J12	2551852.333	524413.169	9.77	J31	2551751.401	524330.097	11.62	J50	2551741.366	524174.040	5.81
J13	2551843.536	524409.410	30.16	J32	2551739.780	524329.971	43.76	J51	2551747.133	524173.353	5.81
J14	2551823.636	524386.509	14.94	J33	2551696.078	524327.643	30.52	J52	2551752.900	524172.630	5.82
J15	2551811.640	524377.607	6.59	J34	2551677.665	524352.003	14.48	J53	2551738.666	524171.872	5.82
J16	2551805.103	524376.748	21.53	J35	2551663.231	524351.060	51.81	J54	2551764.431	524171.079	5.82
J17	2551783.733	524374.128	11.08	J36	2551611.484	524348.474	25.41	J55	2551770.195	524170.249	5.83
J18	2551772.739	524372.928	4.16	J37	2551610.394	524323.084	35.16	J56	2551775.958	524169.382	5.83
J19	2551770.833	524369.128	4.49	J38	2551645.499	524324.955	144.61	J57	2551781.718	524168.478	5.84
J20	2551768.442	524365.328		J39	2551656.022	524180.725		J58	2551787.477	524167.537	

界址点坐标表				界址点坐标表				界址点坐标表			
点号	X	Y	边长	点号	X	Y	边长	点号	X	Y	边长
J58	2551787.477	524167.937	5.84	J77	2551862.540	524151.550	3.27	J96	2551922.002	524133.655	3.27
J59	2551793.234	524166.557	5.84	J78	2551865.701	524150.718	3.27	J97	2551925.093	524132.991	3.27
J60	2551798.987	524165.539	5.85	J79	2551868.859	524149.874	3.27	J98	2551928.180	524131.516	3.27
J61	2551804.738	524164.482	5.85	J80	2551872.014	524149.017	3.27	J99	2551931.263	524130.429	3.27
J62	2551810.485	524163.385	5.85	J81	2551875.166	524148.148	3.27	J100	2551934.342	524129.330	3.27
J63	2551816.228	524162.249	5.80	J82	2551878.314	524147.267	3.27	J101	2551937.416	524128.218	3.27
J64	2551821.906	524161.084	2.51	J83	2551881.458	524146.374	3.27	J102	2551940.486	524127.096	3.27
J65	2551824.367	524160.568	3.27	J84	2551884.599	524145.469	3.27	J103	2551943.552	524125.961	3.27
J66	2551827.563	524159.885	3.27	J85	2551887.737	524144.551	3.27	J104	2551946.613	524124.814	3.27
J67	2551830.757	524159.189	3.27	J86	2551890.871	524143.621	3.27	J105	2551949.670	524123.655	3.27
J68	2551833.940	524158.481	3.27	J87	2551894.001	524142.679	3.27	J106	2551952.722	524122.484	3.27
J69	2551837.137	524157.760	3.27	J88	2551897.128	524141.725	3.27	J107	2551955.770	524121.302	3.27
J70	2551840.323	524157.027	3.27	J89	2551900.251	524140.759	3.27	J108	2551958.813	524120.107	2.46
J71	2551843.506	524156.282	3.27	J90	2551903.370	524139.780	3.27	J109	2551961.102	524119.198	2.39
J72	2551846.686	524155.524	3.27	J91	2551906.485	524138.789	3.27	J110	2551963.323	524118.310	2.40
J73	2551849.863	524154.754	3.27	J92	2551909.596	524137.787	3.27	J111	2551965.550	524117.412	2.40
J74	2551853.037	524153.971	3.27	J93	2551912.704	524136.772	3.27	J112	2551967.774	524116.509	2.40
J75	2551856.208	524153.176	3.27	J94	2551915.807	524135.745	3.27	J113	2551969.994	524115.600	2.40
J76	2551859.375	524152.369	3.27	J95	2551918.907	524134.706	3.27	J114	2551972.209	524114.683	2.40
J77	2551862.540	524151.550		J96	2551922.002	524133.655		J115	2551974.421	524113.765	

界址点坐标表				界址点坐标表				界址点坐标表			
点号	X	Y	边长	点号	X	Y	边长	点号	X	Y	边长
J115	2551974.421	524113.765	2.39	J134	2552015.717	524095.379	2.36	J153	2552055.742	524075.648	2.33
J116	2551976.629	524112.840	2.39	J135	2552017.853	524094.369	2.36	J154	2552057.817	524074.582	2.33
J117	2551978.833	524111.910	2.39	J136	2552019.986	524093.356	2.36	J155	2552059.889	524073.514	2.33
J118	2551981.033	524110.974	2.39	J137	2552022.116	524092.339	2.36	J156	2552061.959	524072.444	2.33
J119	2551983.229	524110.034	2.39	J138	2552024.242	524091.319	2.36	J157	2552064.025	524071.372	2.33
J120	2551985.421	524109.088	2.39	J139	2552026.365	524090.295	2.36	J158	2552066.088	524070.298	2.32
J121	2551987.609	524108.138	2.38	J140	2552028.485	524089.268	2.35	J159	2552068.149	524069.222	2.32
J122	2551989.794	524107.183	2.38	J141	2552030.601	524088.238	2.35	J160	2552070.207	524068.145	2.32
J123	2551991.974	524106.223	2.38	J142	2552032.714	524087.204	2.35	J161	2552072.262	524067.063	2.32
J124	2551994.151	524105.258	2.38	J143	2552034.823	524086.168	2.35	J162	2552074.315	524065.984	2.32
J125	2551996.324	524104.289	2.38	J144	2552036.929	524085.128	2.35	J163	2552076.364	524064.901	2.32
J126	2551998.494	524103.316	2.38	J145	2552039.032	524084.085	2.35	J164	2552078.412	524063.817	2.32
J127	2552000.659	524102.338	2.37	J146	2552041.132	524083.040	2.34	J165	2552080.456	524062.731	2.31
J128	2552002.821	524101.356	2.37	J147	2552043.228	524081.992	2.34	J166	2552082.498	524061.643	2.34
J129	2552004.980	524100.370	2.37	J148	2552045.322	524080.941	2.34	J167	2552084.560	524060.542	1.56
J130	2552007.134	524099.380	2.37	J149	2552047.412	524079.887	2.34	J168	2552086.591	524059.509	2.34
J131	2552009.285	524098.386	2.37	J150	2552049.499	524078.831	2.34	J1	2552113.378	524066.523	28.45
J132	2552011.439	524097.387	2.37	J151	2552051.583	524077.772	2.34	S=103786 平方米 合155.6788亩 2000国家大地坐标系, 中央子午线114度 惠州仲恺高新区潼湖镇ZKD-006-07-01-01地块			
J133	2552013.576	524096.385	2.36	J152	2552053.664	524076.711	2.33				
J134	2552015.717	524095.379		J153	2552055.742	524075.648					